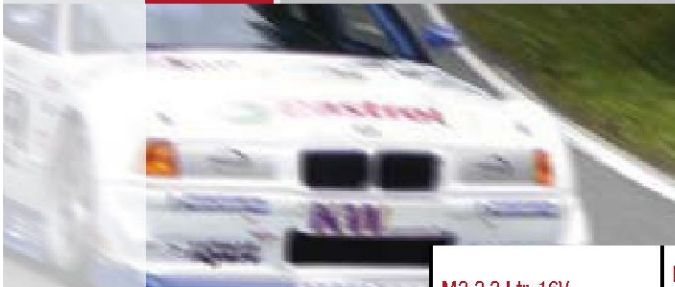


BMW



Model	M3 2.3 Ltr. 16V	M3 2.3 Ltr. 16V OEM Comp. ratio	M3 2.5 Ltr. 16V Sport EVO DTM	M3 2.5 Ltr. 16V Sport EVO Berg
Kit Part No.	K9024D020 K9024D040 K9024D060 K9024D080 -	K9277D020 K9277D040 K9277D060 K9277D080 -	K9007D028 K9007D034 K9007D044 K9007D050 K9007D080	K9008D028 K9008D034 K9008D044 K9008D050 K9008D080
Engine typ	S14/B23	S14/B23	S14/B23	S14/B23
Bore size	93.60* 93.80* 94.00 94.20* -	93.60* 93.80* 94.00 94.20* -	95.28* 95.34* 95.44* 95.50 95.80*	95.28* 95.34* 95.44* 95.50 95.80*
Stroke	84	84	88	88
Displacement	2312ccm	2312ccm	2510ccm	2510ccm
Wössner Comp. ratio	13.0:1	10.8:1	12.8:1	12.8:1
OE Comp. ratio	10.5:1	10.5:1	12.8:1	12.8:1
Comp. height	32	32	30.6	25
Rod lenght	144mm	144mm	144mm	149.70mm
Block height	-	-	-	-
Dome volume	-	-6.9cm ³	+0.5cm ³	-
Gasket thickness	-	-	-	-
Valves per Cylinder	4	4	4	4
Cylinder No.	4	4	4	4
Piston weight in grams	360	357	345	314
Ring Part No.	940XSY* 940XSY* 940XSY 945XSY* -	940XSY* 940XSY* 940XSY* 945XSY* -	955XSY* 955XSY* 955XSY* 955XSY 960XSY*	955XSY* 955XSY* 955XSY* 955XSY 960XSY*
Pin Part No.	WP917	WP917	WP998	WP909
Clip Part No.	CW22	CW22	CW22	CW22
Kit Price Code	A	A	B	B

* Rings need to be shortened / Ringe müssen gekürzt werden

BMW



Model	M3 3.0 Ltr. 24V 2-Ring-Version	M3 3.0 Ltr. 24V US Version	M3 3.2 Ltr. 24V 3-Ring-Version	M3 3.2 Ltr. 24V US Version	M3 3.25 Ltr. 24V
Kit Part No.	K9043DA K9043D050 K9043D075 K9043D100	K9224DA K9224D050 K9224D100 -	K9038DA K9038D025 K9038D050 -	K9225DA K9225D025 - -	K9202DA K9202D050 - -
Engine typ	M50/B30, 1992-95 E36	M50/B30, 1992-95 E36	S50/B32 up, 1995 E36	S50/B32 up, 1995 E36	S54 E46
Bore size	86.00 86.50 86.75* 87.00	86.00 86.50 87.00 -	86.50 86.75* 87.00 -	86.50 86.75* - -	87.00 87.50 - -
Stroke	86	86	91	91	91
Displacement	2990ccm	2990ccm	3209ccm	3209ccm	3246ccm
Wössner Comp. ratio	12.6:1	12.6:1	12.3:1	12.3:1	12.3:1
OE Comp. ratio	10.5:1	10.8:1	11.3:1	10.5:1	11.3:1
Comp. height	31.5	32.80	32	31	32.3
Rod length	142mm	142mm	139mm	139mm	139mm
Block height	-	-	-	-	-
Dome volume	+5cm ³	-	+5.4cm ³	-	+5.4cm ³
Gasket thickness	-	-	-	-	-
Valves per Cylinder	4	4	4	4	4
Cylinder No.	6	6	6	6	6
Piston weight in grams	306	313	316	296	324
Ring Part No.	860XSY 865XSY 870XSY* 870XSY	860XSY 865XSY 870XSY -	865XSY 870XSY* 870XSY -	865XSY 870XSY* - -	870XSY 875XSY - -
Pin Part No.	WP951	WP909	WP934	WP909	WP934
Clip Part No.	CW21	CW22	CW21	CW22	CW21
Kit Price Code	G	G	G	G	G

* Rings need to be shortened / Ringe müssen gekürzt werden